

## **Installation and user guide for E23 Apk Calibration.**

This user manual is to guide the personnel of Service Center to operate the Apk Calibration for E23

Calibration apk is needed to perform calibration of hardware components including Touch Panel, Proximity Sensor and G-Sensor on E23 devices.

This manual will describe the operation steps of calibration in sequence of Touch Panel, Proximity Sensor and G Sensor.

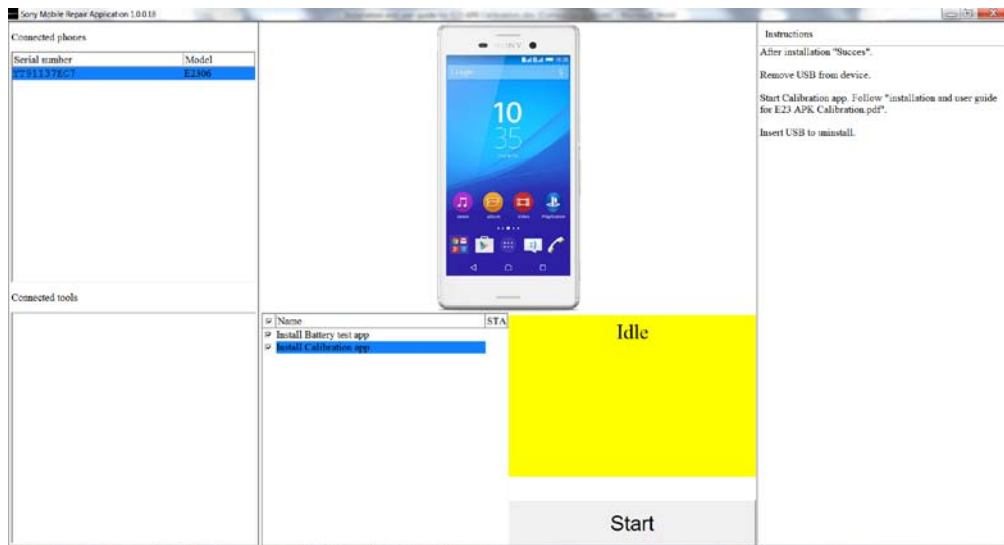
### **Contents**

1	Operations.....	2
1.1	Install APK.....	2
1.2	Touch Calibration .....	4
1.3	Proximity sensor and G sensor calibration.....	6
1.4	Uninstall APK. ....	10
1.5	Disable debug mode. ....	11

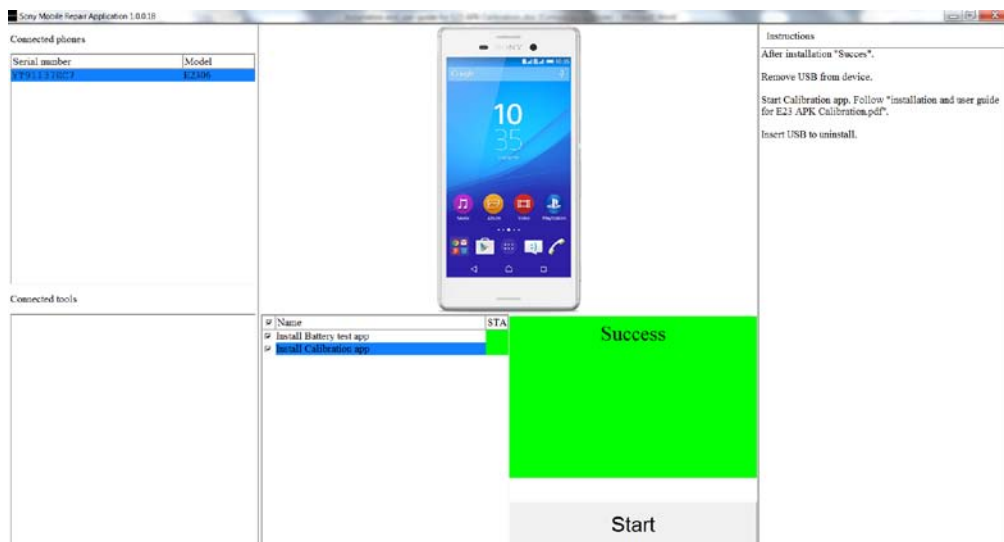
# 1 Operations

## 1.1 Install APK

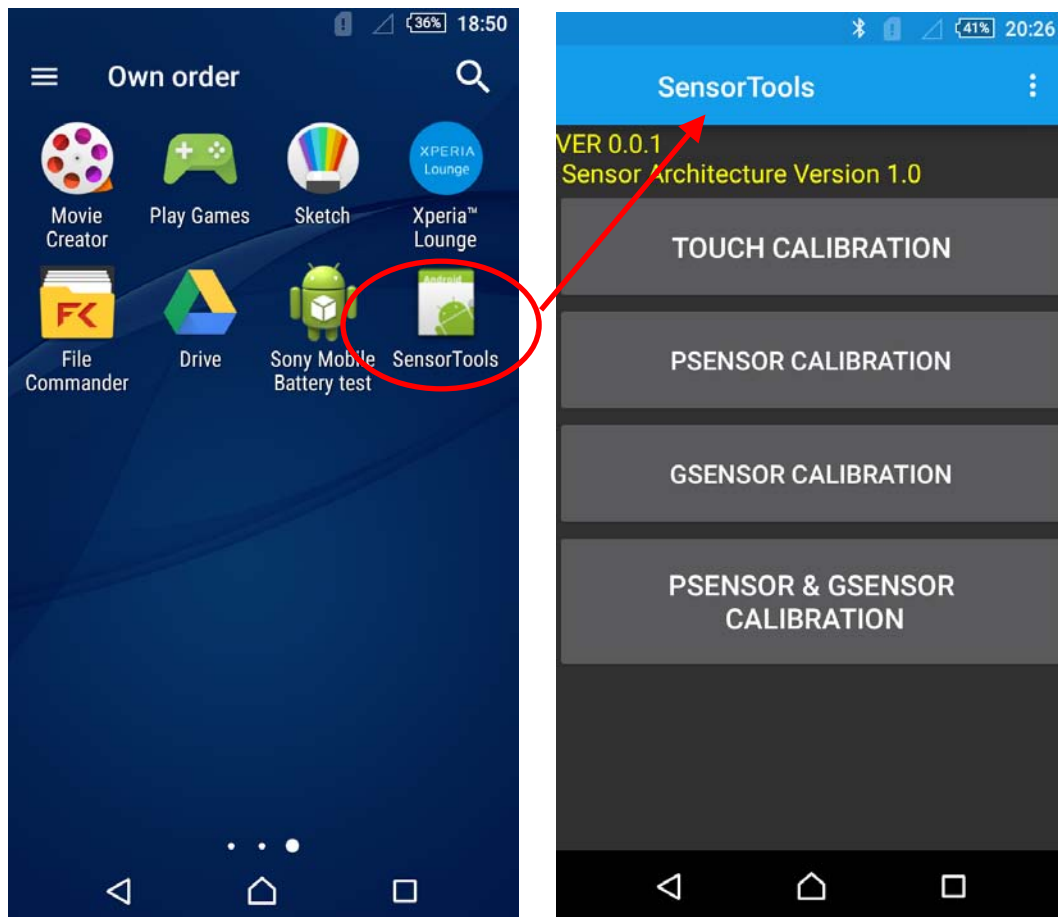
Enable USB debug mode in phone and connect to Sony Mobile Repair Application



Press **Start** to install Calibration app.  
When Success installation, then remove USB from device.

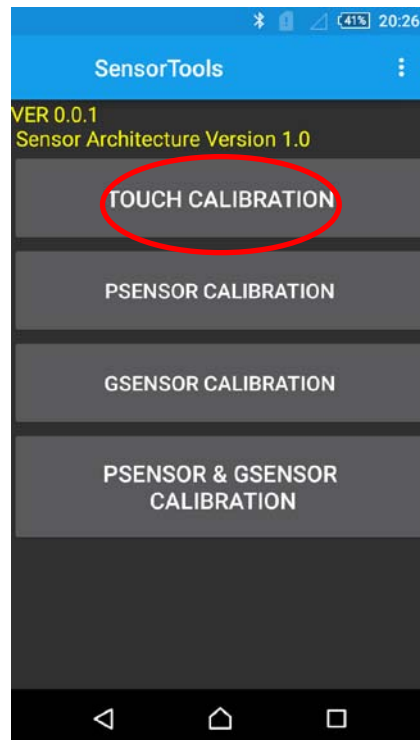


Press Sensor Tools to enter Sensor Tools menu.

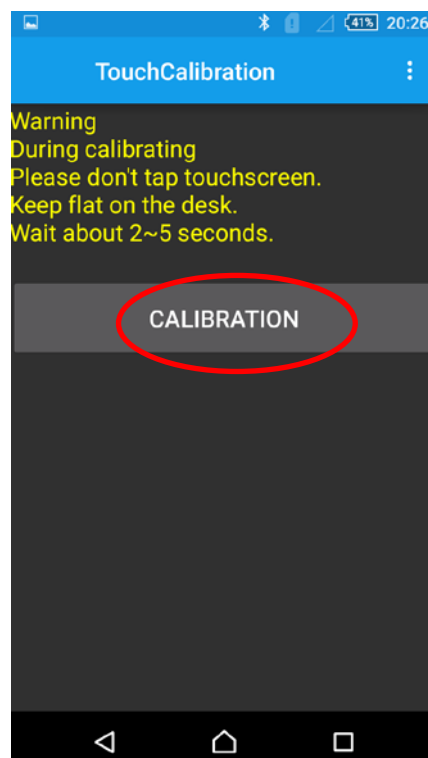


## 1.2 Touch Calibration

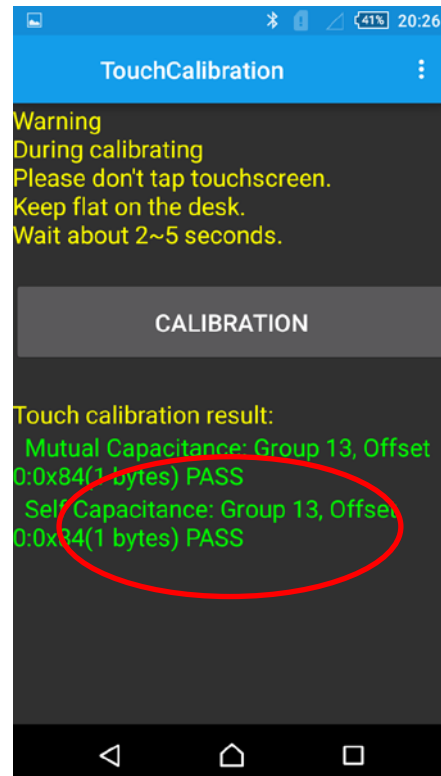
- (1) Select "Touch Calibration" item in Sensor Tools main menu to enter the main page of Touch Panel calibration.



- (2) Select "Calibration". Calibration will start, do not touch screen or put anything on mobile phone.

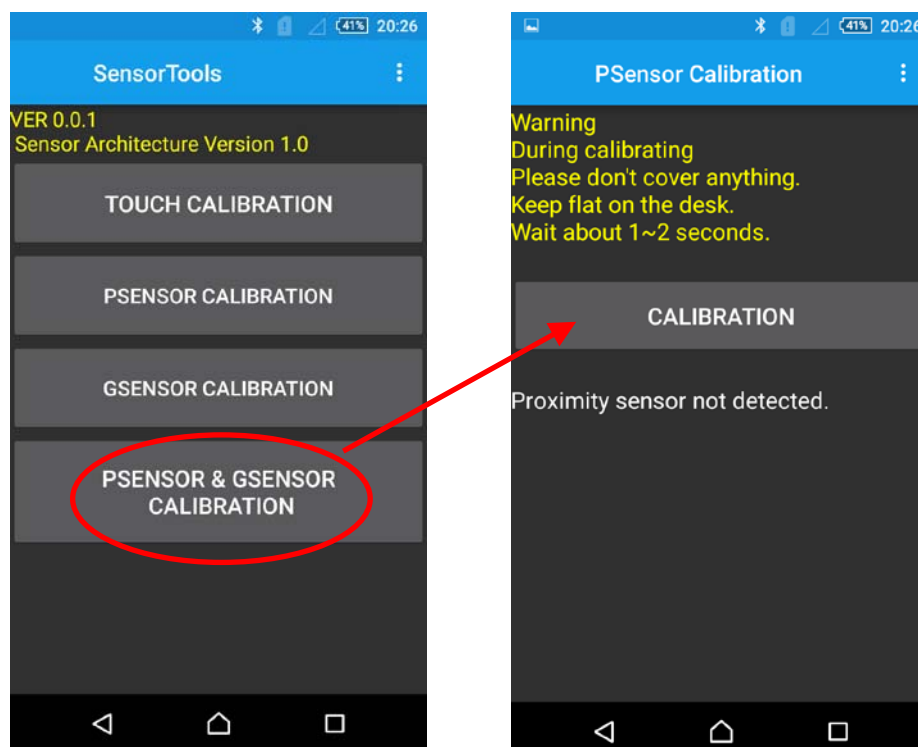


- (3) After Touch panel calibration, the result will show **“PASS”** or **“Fail”**.



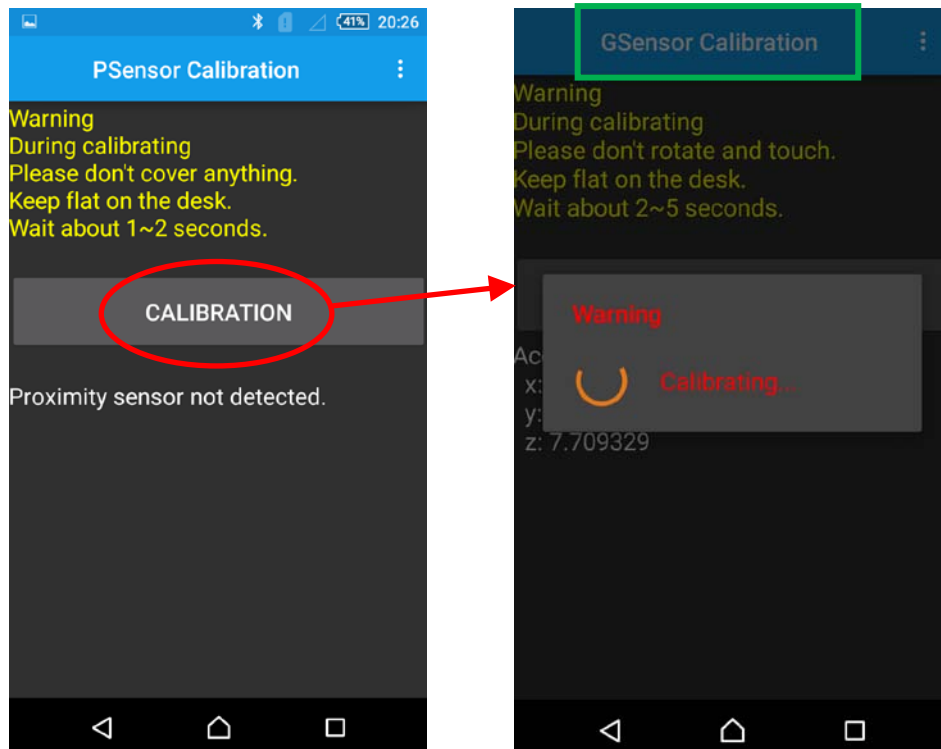
### 1.3 Proximity sensor and G sensor calibration.

- (1) Select "Psensor & Gsensor calibration" item in calibration main menu to enter the page of Proximity calibration.

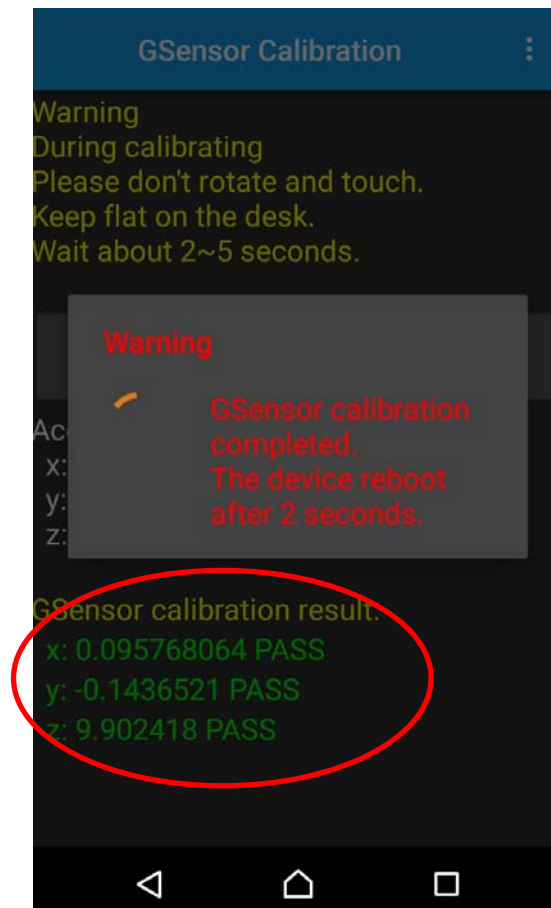


(2) Select "Calibration". Calibration will start, do not cover anything and keep flat on desk adjusted in level.

Note: after successful P sensor calibration G sensor calibration will follow.

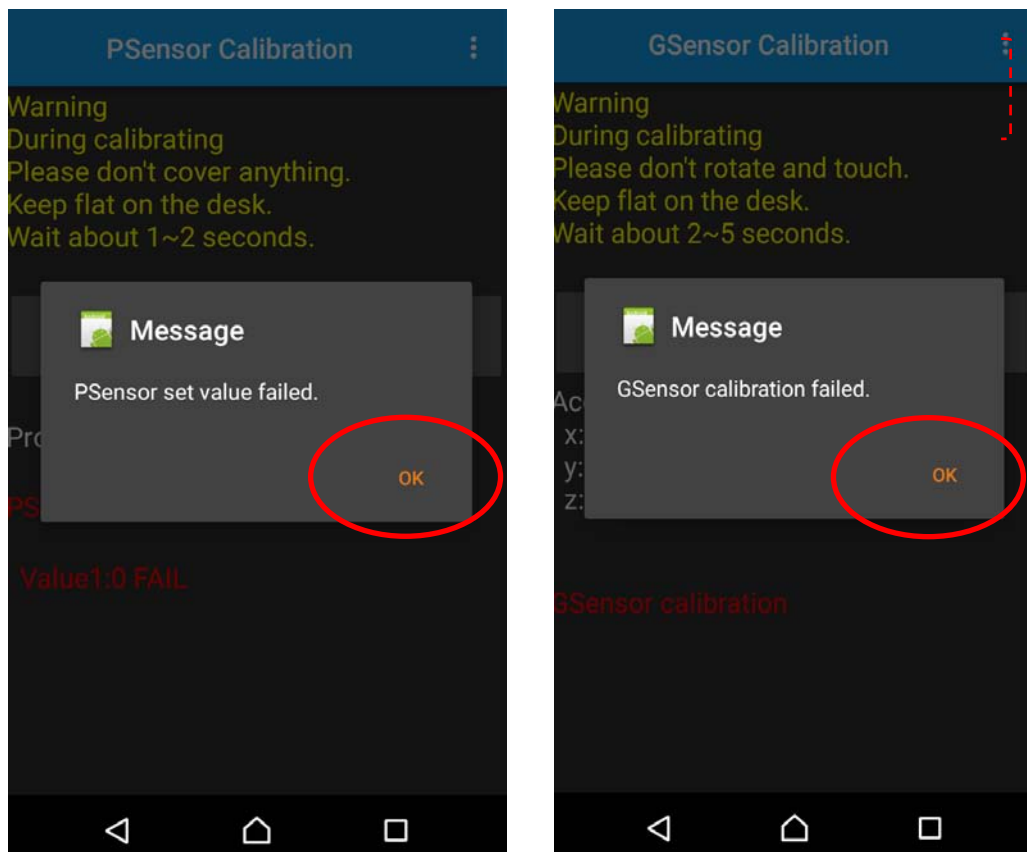


(3) After successful calibration the device will reboot





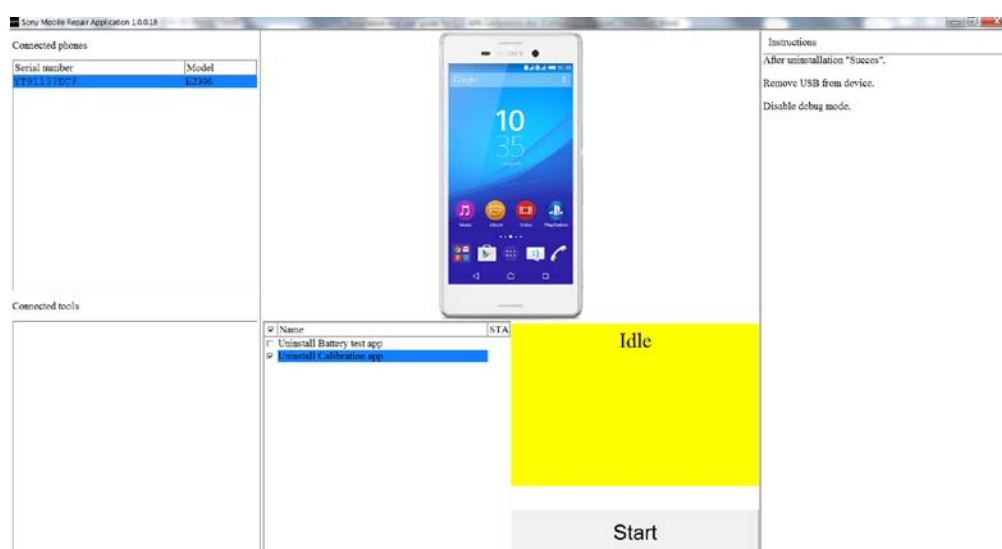
- (4) If calibration fail message Psensor or Gsensor failed will be displayed.  
Press ok to continue.



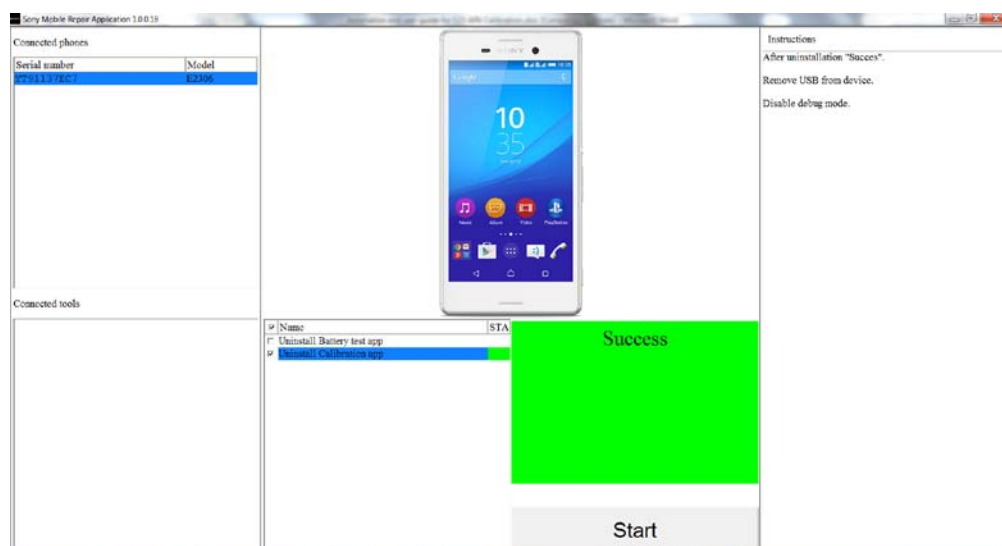
## 1.4 Uninstall APK.

After successful Psensor and Gsensor calibration the calibration APK will be uninstalled.

If not connect phone to Sony Mobile Repair Application.



Press **Start** to Uninstall Calibration app.  
When Success Uninstall, then remove USB from device.



## **1.5      Disable debug mode.**

Remember to disable debug mode in phone.